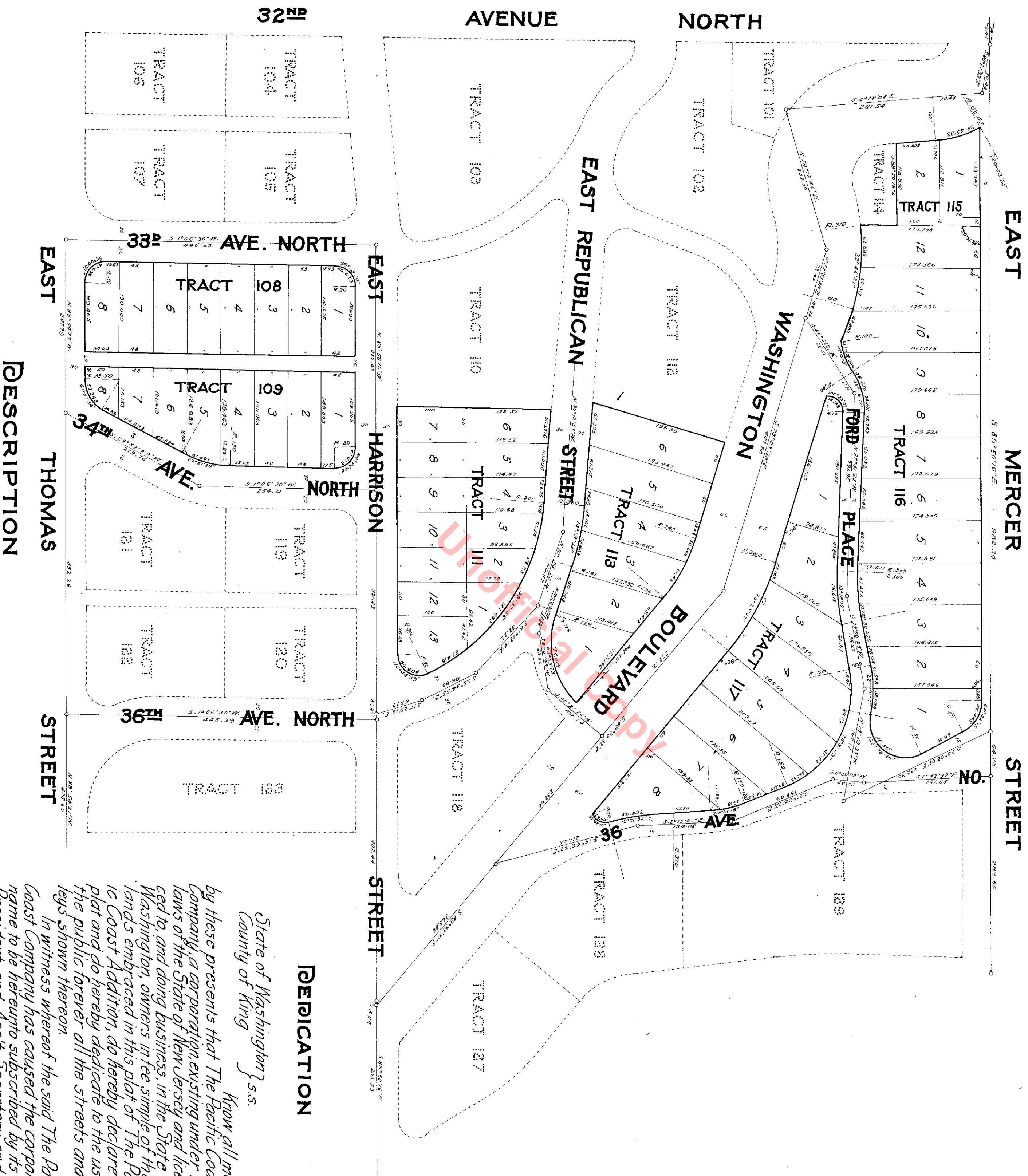


THE PACIFIC COAST ADDITION



DESCRIPTION

The Pacific Coast Addition is a subdivision of Tracts 108, 109, 111, 113, 115, 116, 117, 123, 124, 127, 129, 142, 144 and a portion of 136 of "Replat of John J. McGilvra's Addition to the City of Seattle and Blocks 13, 14, 18, 20 to 29 inclusive" and South Half of 19 of John J. McGilvra's Second Addition to the City of Seattle, also Blocks 35 Lake Washington Shore Lands. The dimensions of all lots are as shown on face of plat.

DEDICATION

State of Washington } s.s.
County of King }

Know all men by these presents that The Pacific Coast Company, a corporation existing under the laws of the State of New Jersey and licensed to, and doing business, in the State of Washington, owners in fee simple of the lands embraced in this plat of The Pacific Coast Addition, do hereby declare this plat and do hereby dedicate to the use of the public forever all the streets and alleys shown thereon.

In witness whereof the said The Pacific Coast Company has caused the corporate name to be hereunto subscribed by its Vice President and Ass't. Secretary and has caused its corporate seal to be hereunto affixed, this 31st day of August, A.D. 1910.

The Pacific Coast Co.

J. C. Ford
Its Vice President

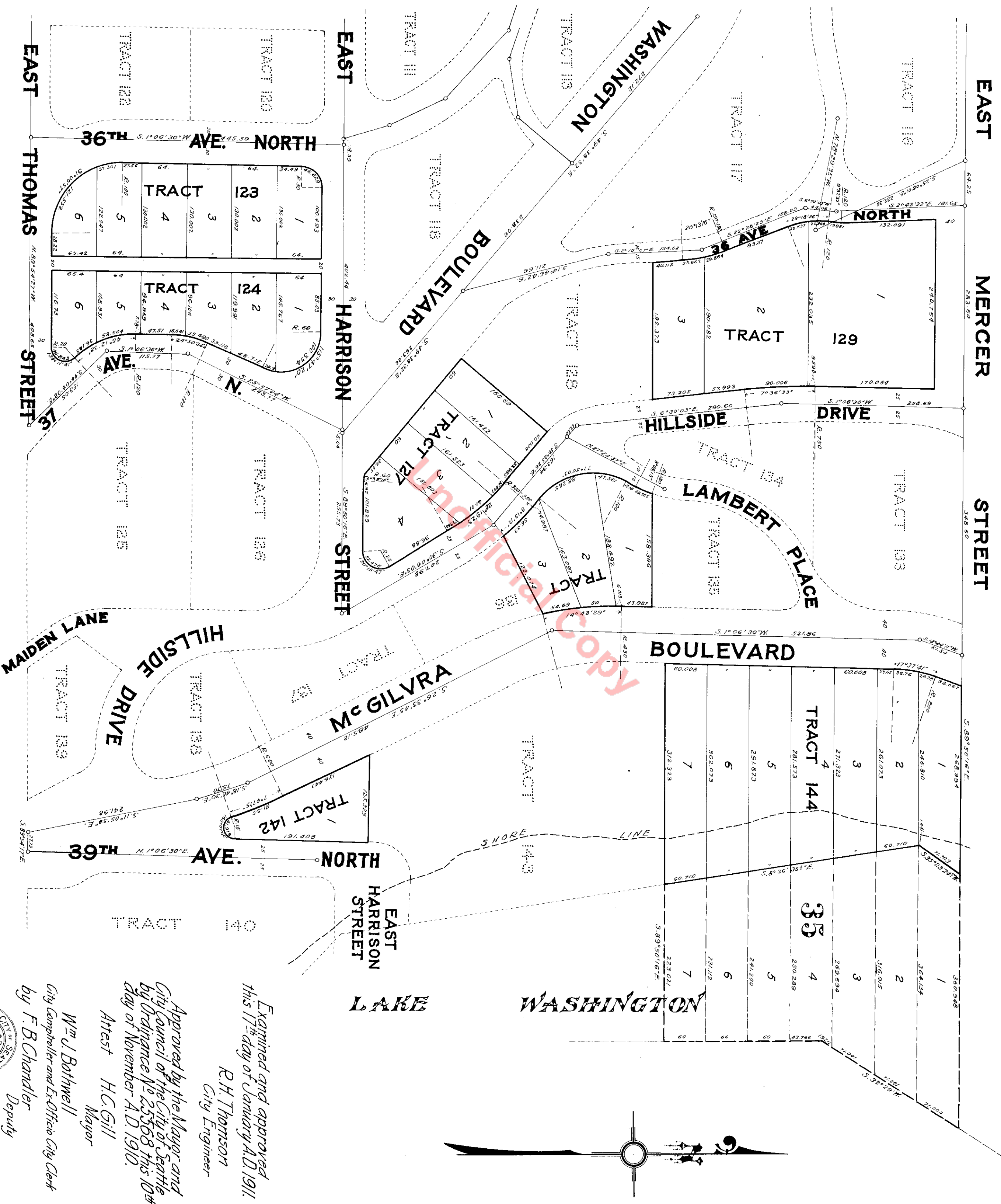
J. W. Smith
Its Ass't. Secretary



THE PACIFIC COAST ADDITION

AN ADDITION TO THE CITY OF SEATTLE

Scale: 1 in. = 100 ft.



ACKNOWLEDGMENT

State of Washington } s.s. On this 31st day of August 1910 before me
 County of King personally appeared J. C. Ford, to me known to be the Vice President and
 U. W. Smith, to me known to be the Asst. Secretary of The Pacific Coast
 Company, a New Jersey corporation, the Corporation that executed the forego-
 ing instrument, and severally acknowledged said instrument to be the free and
 voluntary act and deed of said Corporation for the uses and purposes there-
 in mentioned and on oath, severally stated that he was authorized to execute
 said instrument and that the seal affixed is the corporate seal of said

corporation.
 In witness whereof I have hereunto set my hand and affixed my official
 seal the day and year first above written.



727632

Filed for Record at the request of City Engineer Jan. 23^d 1911 at
 50 miles past 10 A.M. and recorded in Volume 19 of Plats, Page 19 Records
 of King County. Otto A. Case

A.G. Simmer, Draftsman

County Auditor

by *[Signature]*
 Deputy.

Examined and approved
 this 17th day of January A.D. 1911.

R. H. Thomson
 City Engineer

Approved by the Mayor and
 City Council of the City of Seattle
 by Ordinance No. 25368 this 10th
 day of November A.D. 1910.

Attest H. C. Gill
 Mayor

Wm. J. Bottwell
 City Comptroller and Ex-Officio City Clerk
 by F. B. Chandler
 Deputy



L. F. Durne
 Notary Public in and for the State
 of Washington, residing at Seattle