

ASSESSOR'S PLAT OF HUNT'S POINT

Scale: 1 inch = 200 feet.

DESCRIPTION

This "Assessor's Plat of Hunt's Point" is composed of Lot 1 of Section 13 and Lots 1 and 2 of Section 24, Township 25 North, Range 4 East and Lots 1 and 2, Section 19, Township 25 North, Range 5 East, W.M.

Distances on East and West lines are to shore line and are only approximate.

CERTIFICATE

I hereby certify that the plat of "Assessor's Plat of Hunt's Point" is based upon an actual survey and subdivision of Section 13 and Section 24, Township 25 North, Range 4 East and Section 19, Township 25 North, Range 5 East, W.M.

J.R. Morrison
County Engineer

Examined and approved by the Board of County Commissioners of King County, State of Washington, this 20th day of March A.D. 1911.

Attest: Otto A. Case
Clerk
by N.M. Wardall
Deputy
David McKenzie
Chairman

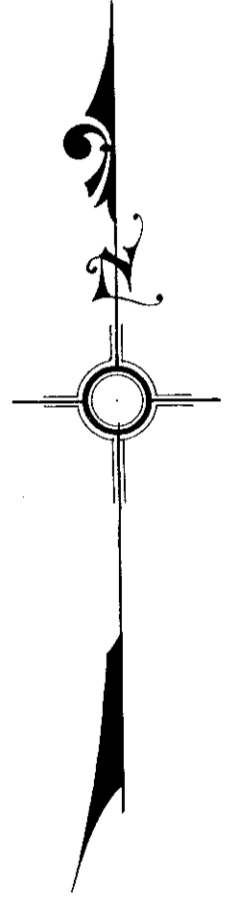
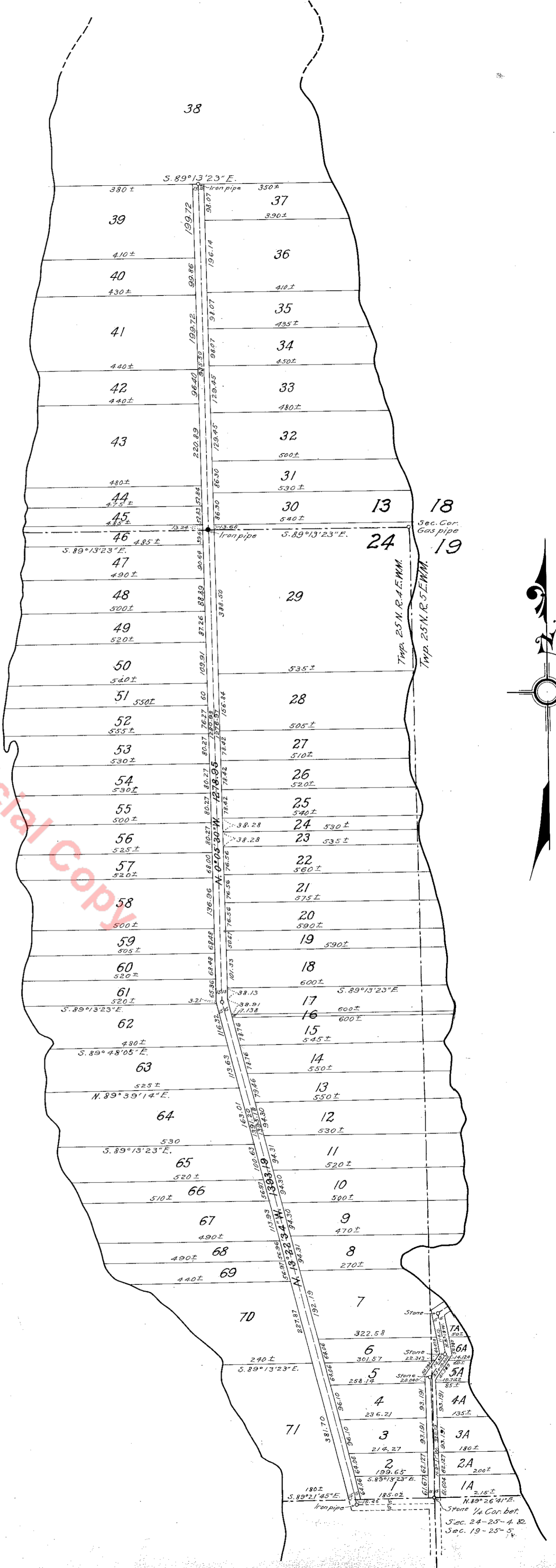


737186

Filed at the request of Otto A. Case this 20th day of March A.D. 1911, at 2²⁰ P.M. and recorded in Vol. 19 of Plats, page 97 Records of King County, Washington.

Otto A. Case
County Auditor
by *[Signature]*
Deputy

A.G. Simmer
Draftsman



Unofficial Copy