

INDUSTRIAL ADDITION TO THE CITY OF SEATTLE

Scale:
1 Inch ≈ 100 Feet.

Approved by the Mayor and the
City Council of the City of Seattle
by Ordinance No. 38594 this 15th
day of July A. D. 1918.

Ole Hanson
Mayor

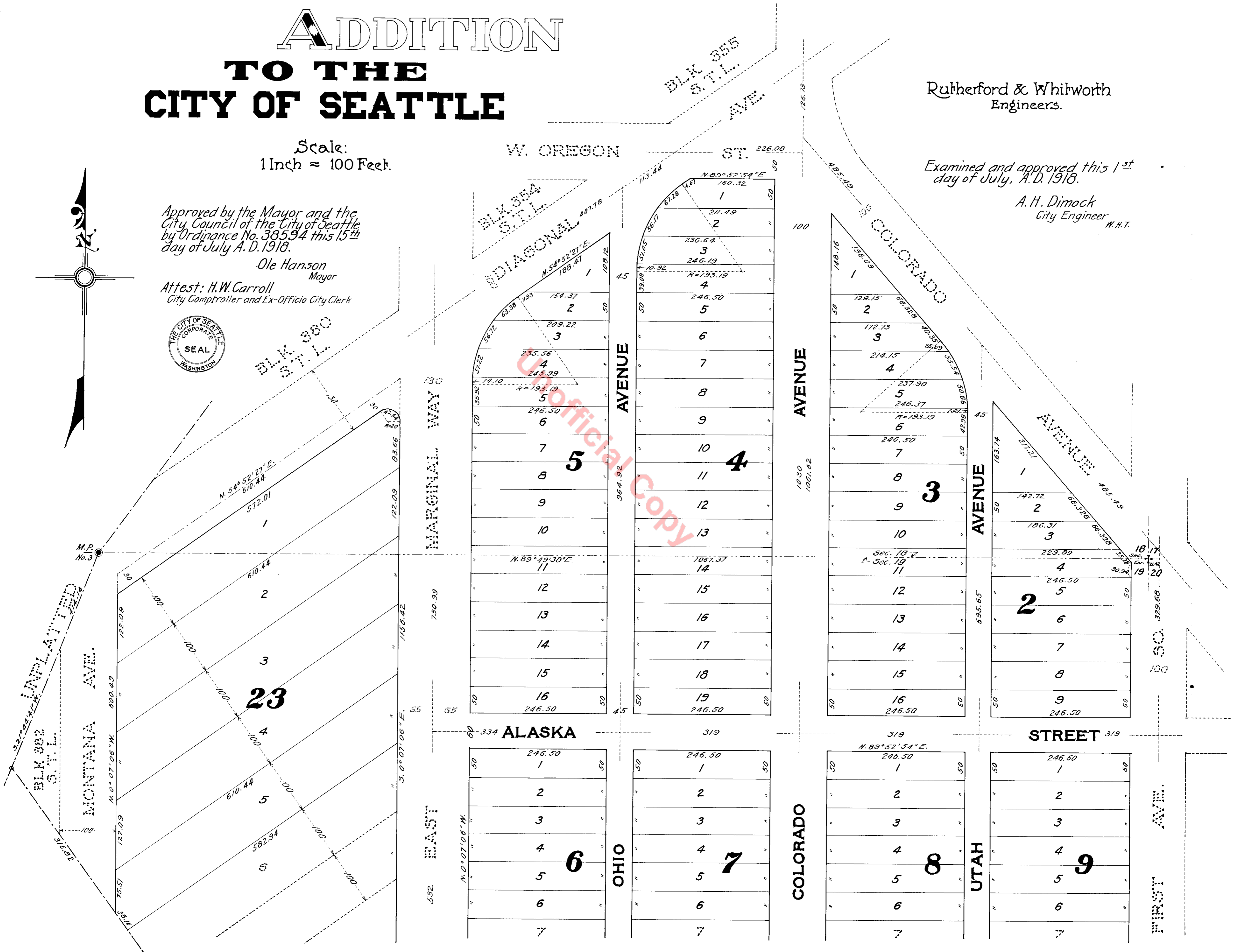
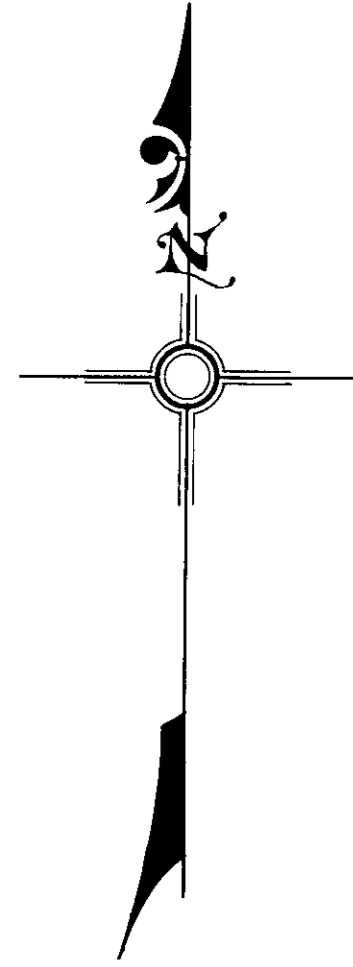
Attest: H. W. Carroll
City Comptroller and Ex-Officio City Clerk



Rutherford & Whitworth
Engineers.

Examined and approved this 1st
day of July, A. D. 1918.

A. H. Dimock
City Engineer W. H. T.



Official Copy

INDUSTRIAL ADDITION TO THE CITY OF SEATTLE

Scale : 1 Inch = 100 Feet



ACKNOWLEDGMENT

State of Washington } s.s. On this 21st day of May
County of King } A. D. 1918, before me per-
sonally appeared N. H. Latimer and John H. Powell to
me known to be the President and Secretary respec-
tively of the corporation that executed the within and
foregoing instrument and acknowledged the said in-
strument to be the free and voluntary act and deed of

said corporation for the uses and purposes therein
mentioned and on oath stated that they were autho-
rized to execute said instrument and that the seal
affixed is the corporate seal of said corporation,
in witness whereof I have hereunto set my hand
and affixed my official seal the day and year first
above written.

Gordon Mifflin
Notary Public in and for the State
of Washington, residing at Seattle.



1255294

Filed for record at the request
of City Engineer Oct. 24-1918, at 5:57
min. past 3 P.M. and recorded in Vol-
ume 22 of Plats, page 82, Records of
King County, Washington.

Norman M. Wardall
County Auditor

by *[Signature]*
Deputy

A. G. Simmer
Deputy

APPLAIED
H. W. Cor. El. Maple Dam, Cl.
319.01 Stone Mark
245.37 84.94

McCALLISTER'S

STREET

INDUSTRIAL ADDITION

CITY OF SEATTLE

INDUSTRIAL ADDITION TO THE CITY OF SEATTLE

Scale: 1 Inch = 100 Feet.

Blocks 1001 to 1018 REPLATED
See Vol. 34 of Plats pages 1 & 2

DESCRIPTION

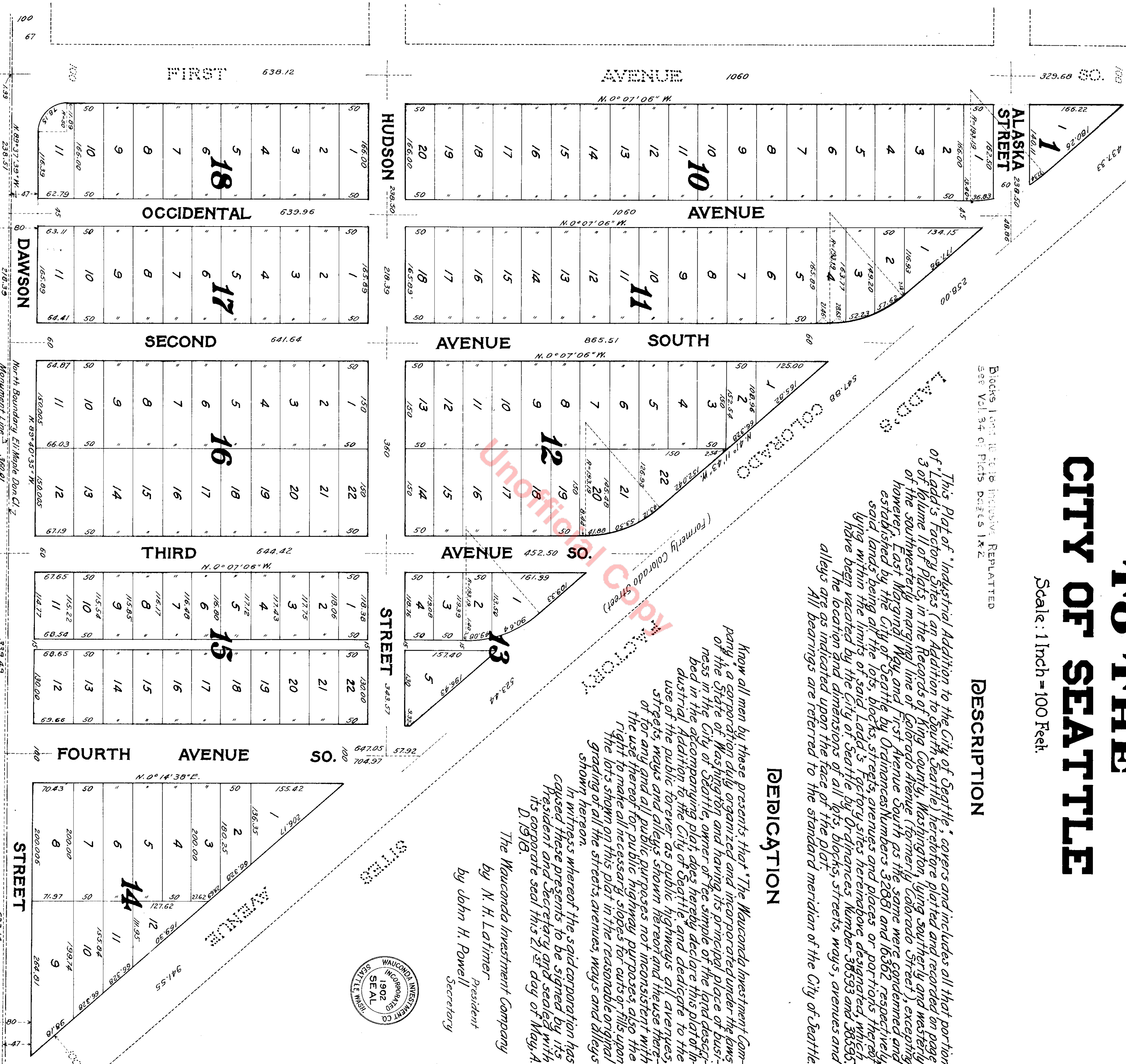
This Plat of "Industrial Addition to the City of Seattle," covers and includes all that portion of Ladd's Factory Sites (an Addition to South Seattle) heretofore platted and recorded on page 3 of Volume 11 of Plats, in the Records of King County, Washington, lying southerly and westerly of the southeasterly margining line of Colorado Avenue (formerly Colorado Street), excepting however, East Marginal Way and First Avenue South as the same were condemned and established by the City of Seattle by Ordinances Numbers 32881 and 16362 respectively, said lands being all the lots, blocks, streets, avenues and places or portions thereof lying within the limits of said Ladd's Factory Sites herinabove designated, which have been vacated by the City of Seattle by Ordinances Number 36593 and 36595. The location and dimensions of all lots, blocks, streets, ways, avenues and alleys are as indicated upon the face of the plat. All bearings are referred to the standard meridian of the City of Seattle.

DEDICATION

Know all men by these presents, that "The Maconada Investment Company," a corporation duly organized and incorporated under the laws of the State of Washington and having its principal place of business in the City of Seattle, owner of the simple of the land described in the accompanying plat, does hereby declare this plat of Industrial Addition to the City of Seattle, and dedicate to the use of the public forever as public highways all avenues, streets, ways and alleys shown hereon and the use thereof for any and all public purposes not inconsistent with the right thereof for public highway purposes, also the right to make all necessary slopes for cuts or fills upon the lots shown on this plat in the reasonable original grading of all the streets, avenues, ways and alleys shown hereon.

In witness whereof the said corporation has caused these presents to be signed by its President and Secretary and sealed with its corporate seal this 21st day of May, A. D. 1918.

The Maconada Investment Company
by N. H. Latimer
President
by John H. Powell
Secretary



McCALLISTER ST

ADDITION

MAPPER'S ADDN.