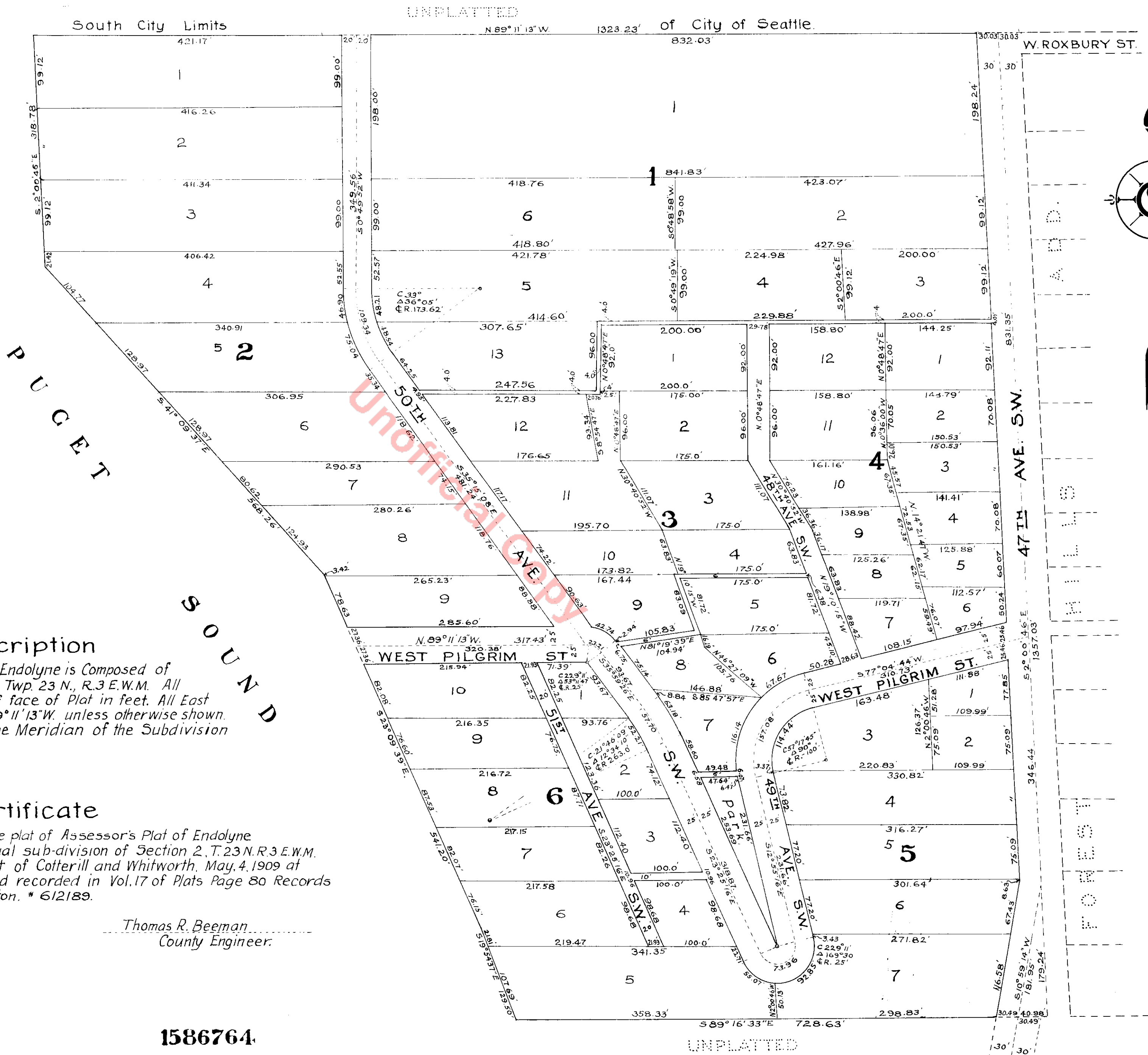


Assessor's Plat of ENDOLYNE

Sec. 2 T23N.R.3E.W.M.

Scale, 1 in. = 100 Ft.



Description

This Assessor's Plat of Endolyne is Composed of Govt. Lot 4 of Section 2 Twp. 23 N., R. 3 E.W.M. All distances are shown of face of Plat in feet. All East and West lines are N. 89° 11' 13" W. unless otherwise shown. The Meridian used is the Meridian of the Subdivision of said Section 2.

Certificate

I hereby Certify that the plat of Assessor's Plat of Endolyne is based upon an actual sub-division of Section 2, T. 23 N. R. 3 E.W.M. as filed at the request of Cotterill and Whitworth, May, 4, 1909 at 6 minutes past 2 P.M. and recorded in Vol. 17 of Plats Page 80 Records of King County Washington. * 612189.

Thomas R. Beeman
County Engineer.

1586764

Filed at the request of D.E. Ferguson this 1 day of Feb. A.D. 1922, at 12:05 P.M. and recorded in Vol. 25 of Plats, Page 40 Records of King County Washington.

D.E. Ferguson
County Auditor.

J. H. Carder
Draftsman.



Examined and approved this 31st day of Jan. AD. 1922.

Claude C. Ramsay
Chairman, Board of County Commissioners.

Attest
J. W. Dutton
Dep. Clerk of Board of County Commissioners.