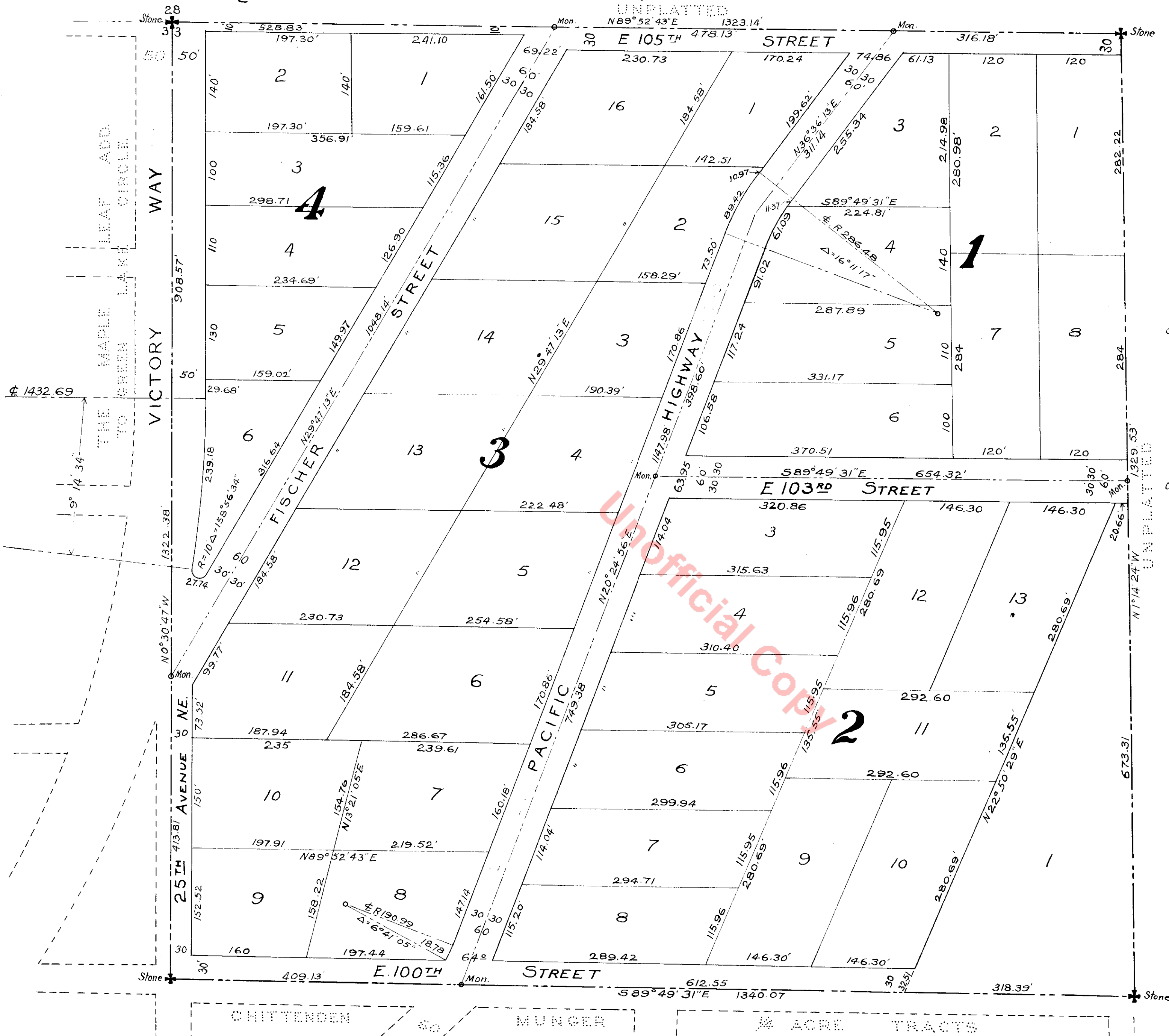


# FISCHER'S HIGHWAY GARDEN TRACTS.

Parker-Gould & Co.,  
Civil Engineers

King County, Wash

Scale: - 1" = 100'



Examined and approved this 27th day  
of February A.D. 1922.  
Thomas R. Beeman,  
County Engineer  
By Thomas D. Hunt,  
Deputy

Examined and approved this 28 day  
of February A.D. 1922.  
Claude C. Ramsay,  
Chairman, Board of  
County Commissioners

Attest: D. E. Ferguson,  
Clerk of board.  
By J. W. Dutton,  
Deputy



Filed for record at the request of the  
King County Engineer, this 28th day of  
Feb. A.D. 1922, at 44 minutes  
past 4 o'clock P.M., and recorded  
in Volume 26 of Plats, page 1 records  
of King County, Wash.

County Auditor

By \_\_\_\_\_  
Deputy

T. H. Carder,  
Draftsman.

## Description

This plat of Fischer's Highway Garden Tracts, King County, Wash., embraces all of the NW 1/4 of the NE 1/4 of Section 33, Township 26 North, Range 4 East, W.M.

We hereby certify that the plat of Fischer's Highway Garden Tracts is based upon an actual survey and subdivision of Sec. 33 Twn. 26 N. R. 4 E. W. M.; that the distances and courses and angles are shown correctly; that the monuments have been set and lot and block corners staked on the ground.

Parker-Gould & Co.,  
By I. C. Parker.

## Dedication

Know all men by these presents that we, the undersigned, August Fischer and Wilhelmine Fischer (his wife) owners in fee simple of the land hereby platted, hereby declare this plat and dedicate to the use of the public forever, all streets, avenues, places and sewer easements or whatever public property there is shown on plat and the use thereof for any all public purposes not inconsistent with the use thereof for public highway purposes; also the right to make all necessary slopes for cuts or fills upon the lots, blocks, tracts, etc., shown on this plat in the reasonable original grading of all the streets, avenues, places, etc. shown hereon.

In Witness Whereof we have hereunto set our hands and seals this 28th day of June, A.D. 1921

August Fischer  
Wilhelmine Fischer

In Presence of Frank P. Lewis, Witness

## Acknowledgement

State of Wash., } ss. This is to Certify that on this 28th day  
County of King } before me, the undersigned, a Notary Public,  
personally appeared August Fischer and Wilhelmine Fischer  
(his wife), to me known to be the persons who executed  
the foregoing dedication and acknowledged to me that  
they signed and sealed the same as their free and vol-  
untary act and deed for the uses and purposes therein  
mentioned.

Witness my hand and official seal  
the day and year first above written.

Frank P. Lewis

Notary Public in and for the State of Wash.,  
residing at Seattle.

FRANK P. LEWIS  
NOTARY PUBLIC  
STATE OF  
WASHINGTON.  
COMMISSION EXPIRES  
APRIL 2, 1923